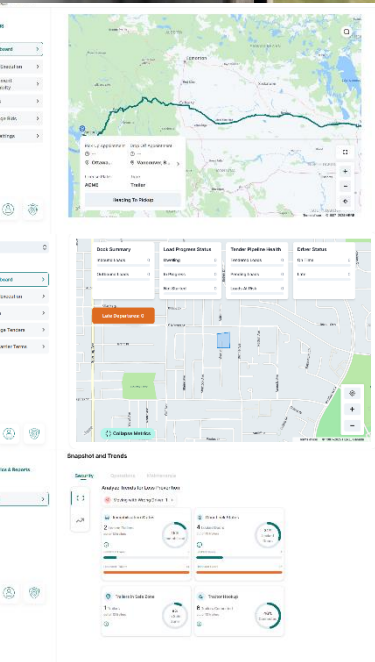




# ADMIRAL LOCK

## Authorization-Enforced Cargo Access

Compact 200 kN interior electric lock for swing, roll-up, and sliding doors across trailers, trucks, and intermodal containers.



### ▶ What It Enforces

Admiral Lock enforces authorization at the trailer door. Access is granted only when applicable authorization conditions — including load, company, driver, time, and location — are valid. Authorization rules are issued in advance and enforced autonomously by the asset itself — without human supervision.

Opening authority can be assigned to the shipper or consignee — not just the carrier or driver.

### ▶ Policy-Bound Access Control

Access can be enforced per load, per driver, per company, and by time and location — with opening authority assigned explicitly rather than assumed. Admiral documents not only who unlocked the asset — but who granted permission, when, and under what conditions. This preserves clear custody by enforcing who is authorized access — eliminating ambiguity during execution.

### ▶ Autonomous Operation in Real Freight Environments

Because authorization is pre-validated, trailers can unlock automatically when entering trusted zones and lock automatically when exiting. This allows docks to move faster and yard workflows to simplify — without sacrificing control.

The lock enforces rules even during outages or in dead zones, supporting unattended assets and dropped trailers.

### ▶ Enforcement First. Evidence Second.

Unauthorized access attempts are prevented at the door. After enforcement, Admiral records: Break-in attempts and tamper events, door open and close events. Predictive diagnostics highlight mechanical or electrical issues early, so maintenance can be planned instead of forced.

It also detects insider manipulation — such as repositioning the lock to appear latched when it is not.

### ▶ Part of Admiral Enforce

Movement enforcement and system-level controls operate alongside Admiral Lock as part of Admiral Enforce — ensuring freight assets refuse unauthorized actions across the entire execution chain.

